

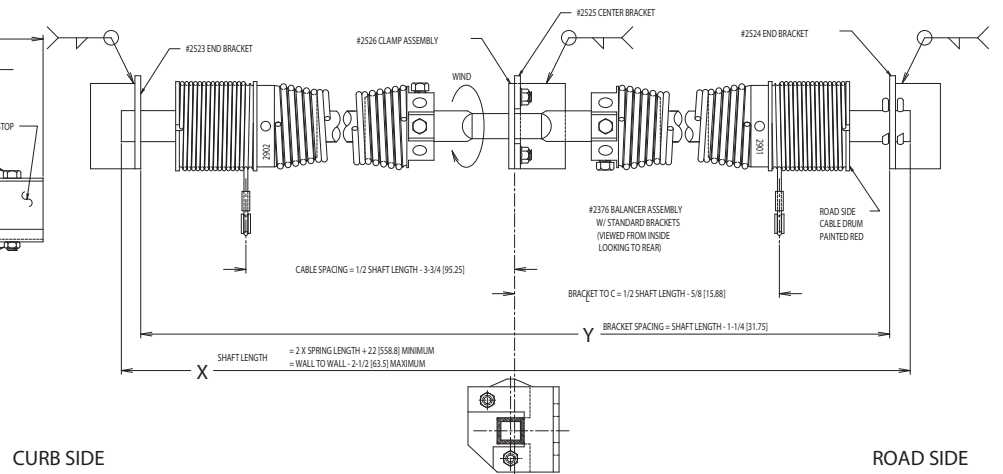
NOTE: HORIZONTAL TRACK MUST BE MOUNTED IN LINE & PARALLEL WITH VERTICAL TRACK. DIAGONAL SQUARENESS OF OPENING WITHIN 1/4 (6.35)

TOP CLOSURE BRACKET SHOULD BE SO ADJUSTED THAT WHEN THE DOOR IS IN THE DOWN POSITION, THE TOP PANEL IS VERTICAL, THEN TIGHTEN LOCKING NUTS

WHEN CONSIDERING THE INSTALLATION OF A ROLL-UP DOOR, THE FOLLOWING PROCEDURE MUST BE FOLLOWED:
- CONSIDER THE EFFECTIVE HEADER HEIGHT, WHICH IS THE AMOUNT OF USABLE SPACE BETWEEN THE BOTTOM EDGE OF THE HEADER AND THE LOWEST TRACK RADI ARE INDICATED. IT IS USUALLY DESIRABLE TO HAVE THE HORIZONTAL TRACK AS HIGH AS POSSIBLE. PICK THE TRACK WITH THE GREATEST RADII WHICH ALLOWS THE "G" DIMENSION TO FALL WITHIN THE DESIGNATED LIMITS AND AT THE SAME TIME OBSERVING MINIMUM DISTANCE BETWEEN THE TOP OF THE HORIZONTAL TRACK AND THE UNDERSIDE OF THE ROOF.

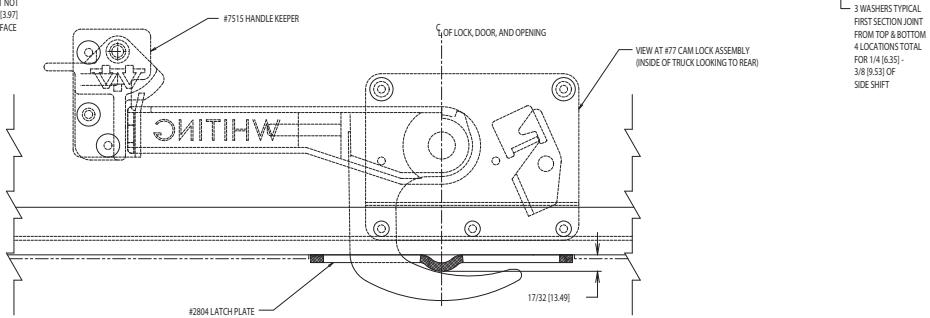
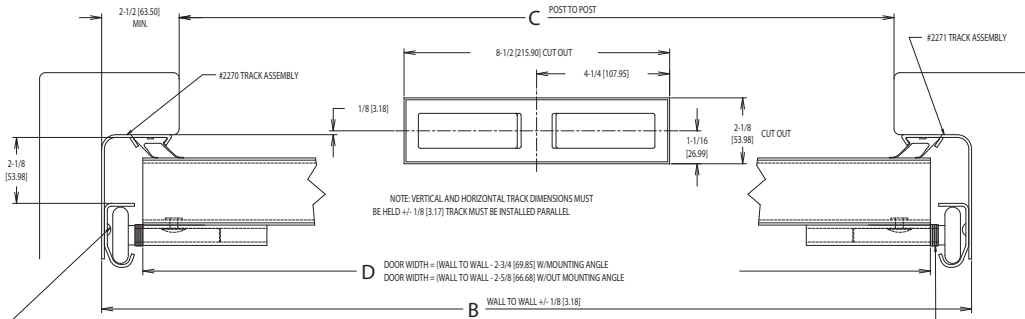
- NOTES:
- DIMENSIONS A, B, C, & F ARE NEEDED WITH ALL ORDERS
 - MINIMUM HEADER HEIGHT IS 6-1/4 (158.75)
 - TO COVER OPEN DOOR DIMENSION F MUST BE A MINIMUM OF 9-3/4 (247.65)

A	B	C	D	E	F
SILL TO HEADER	WALL TO WALL	POST TO POST	DOOR WIDTH	VERTICAL TRACK	EFFECTIVE HEADER



CURB SIDE

ROAD SIDE



NOTE: DIMENSIONS IN () ARE MILLIMETERS

REVISIONS				TOLERANCES UNLESS OTHERWISE SPECIFIED ARE:				WHITING DOOR MANUFACTURING LTD. 3435 SOUTH SERVICE ROAD BURLINGTON, ONTARIO L7N 3W6	TITLE	SCALE	DWG. NO.	REV.
DATE	BY	DESCRIPTION OF CHANGE	DATE	BY	DESCRIPTION OF CHANGE	DATE	BY					
11/18/02	P	REVISED AND UPDATED PER CURRENT SPECIFICATIONS	MJS	DCW				STANDARD INSTALLATION 2-1/8" COLDSAVER DOOR	1/2"=1"	D-1946	P	
8/12/97	D	STANDARD OPERATOR CHANGED BACK TO 42376		GSB	DENOMAL #10							
2/26/97	N	ADDED METRIC DIMENSIONS		GSB	FRACTION 1/16"							
	DATE	BY	DESCRIPTION OF CHANGE	DATE	BY	DESCRIPTION OF CHANGE	DATE	BY	DESCRIPTION OF CHANGE	DATE	BY	DESCRIPTION OF CHANGE