

AMDOR[®]

DOORS - LIGHTS - LIFTING

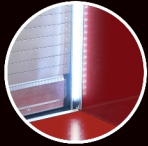


**Custom Engineered Solutions
For The Specialty Vehicle Market**

AMDOR.com



Why AMDOR?



Every AMDOR is available with a snap-in Luma Bar Integral LED lighting system

Smooth interior wall provides maximum protection against equipment hang-ups



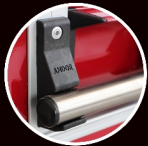
Driven ball and socket design acts as a structural hinge making the AMDOR curtain the strongest on the market



Bottom flange cut-outs allow for easier access with gloved hands



Strikers support the lift-bar from below to help provide a better seal, reduce seal wear, & prevent door bounce; virtually eliminating false door-ajar signals



Removable snap-lock end shoes allow for rapid slat replacement



The Strongest Roll-Up Door On The Market

Customizable Options

AMDOR offers the ability to fully customize your roll-up door. Everything from the door curtain finish, door ajar switches, door frames, locking options, and more.

For complete details please visit AMDOR.com/options

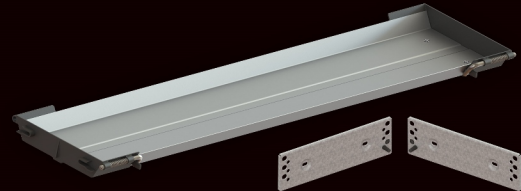
Flex - HD Pull Strap

The Flex - HD Pull Strap is connected to both the bottom panel of your roll-up door and the side wall of your compartment. The elastic design ensures that the strap is easily accessible, out of the way while the compartment is open, and will not act as a nuisance while attempting to secure the door.



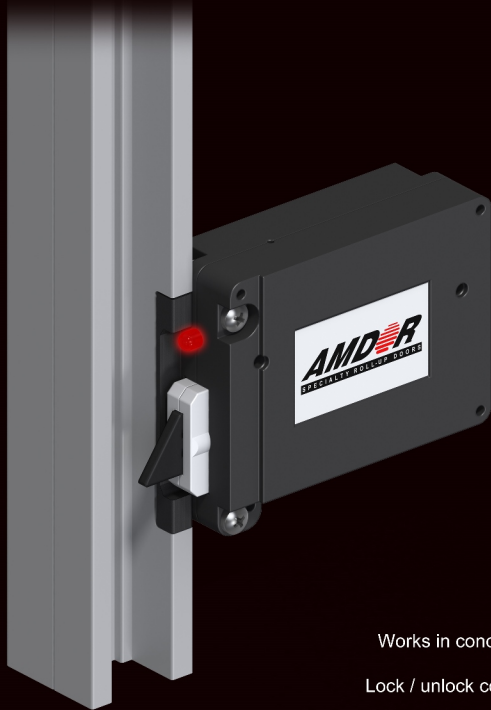
Drip Shield

AMDOR's Drip Shields are suitable for OEM or retrofit applications, and built to accommodate any door size up to 96" wide. The design features a hinge system that offers ease of access and optional drainage capabilities.



AMLK

**Complete Compartment Security
At The Push Of A Button**



**Optional Key Fob Remote*

Provides increased security

Works in concert with key locking systems

Lock / unlock compartments simultaneously

Mechanical override in the event of power failure

Magnetic Door Ajar Switch



Technical Specifications

Positive or negative ground switching.
9-16 VDC, 30 Amp capacity on two
15 Amp circuits.

Mounting Locations

The sensor can be mounted at any height
within the side frame. The corresponding
magnet may be integrated within the door
curtain or the bottom panel of your
AMDOR Roll-Up Door.

Mechanical Door Ajar Switch

Striker Integrated Switch

Features a military grade push-button
switch that is integrated within
AMDOR's proprietary striker and is
protected from ingress of
water and debris.

Security

Our proprietary striker supports the
lift-bar from above and below.
The mechanical switch mechanism
ensures positive engagement
of the lift-bar.



NFPA Compliance Testing

AMDOR's NFPA compliant door ajar system has been tested to 1-million cycles
under load with the Luma Bar Integral compartment lighting system

AMD R **luma** **bar**®

Lighting The Way

Integral

The Integral (IP-67 rated) is designed to snap into the side frame of your AMDOR Roll-Up Door to deliver seamless integration. The light is encased in a high impact polycarbonate enclosure and features Luma Bar's patented variable aiming system.

Standard & Custom Lengths
Clear White, Red, Blue,
Red / White, & Blue / White Combo
12v or 24v



Stand Alone

The Luma Bar product that revolutionized compartment lighting. The Stand Alone (IP-67 rated) has a full length aluminum extrusion and is encased in a high impact polycarbonate enclosure that features Luma Bar's patented variable aiming system.

Standard & Custom Lengths
Clear White, Red, Blue,
Red / White, & Blue / White Combo
12v or 24v



Superior LED Lighting Solutions For Any Application

Pathfinder

The Pathfinder delivers a continuous illuminated walkway, ideal for aerial applications. The assembly is supplied with a full length aluminum mounting extrusion and a high impact polycarbonate lens that is UV and ozone stable to prevent yellowing over time.

Custom Lengths To Suit Nearly Any Aerial Or Walkway Application
Red, White, Blue, Green, Orange



The Pathfinder offers nearly endless lighting capabilities including: aerials, hose beds, dunnage areas, tool boxes, interior floors, or any other application requiring a low profile, water resistant solution.

Dual Color Combination Lights

Luma Bar's most versatile lighting option offers the benefits of either blue/white or red/white color options at the flick of a switch. This option is available in both the Integral & Stand Alone models.

AMD R **luma**bar®

Lighting The Way

ALS-V

This highly versatile interior lighting assembly features a wide range of mounting brackets combined with interchangeable colored lenses. Includes everything required for flush-mount and snap-in installations. [Red](#), [White](#), [Blue](#), [Green](#), [Amber](#)



ALS

The 'Advanced Lighting System' is a fully submersible (IP-68 rated) assembly that is ideal for any application that requires a high output light source in a small package and can be installed in nearly any location.

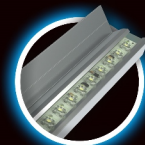


Superior LED Lighting Solutions For Any Application

H2O

Designed to withstand full water submersion (IP-68 rated), the H2O is ideally suited for any exterior application. When combined with our optional full length aluminum extrusion, the H2O is the most effective and versatile ground light on the market.

12", 20", & 40" Lengths
Bright White, Clear White, Utility White, Red
12v or 24v



SuperBright

Initially designed for pump panel applications (IP-67 rated), the SuperBright's tightly focused beam pattern provides uniform illumination and is ideal for any application that requires a high level of visibility.



20" & 40" Lengths
Clear White
12v or 24v



ArtLIFT®

ArtLIFT ELC

The ArtLIFT ELC system solves the problem of loading or unloading heavy goods in applications where a conventional lift-gate would be too heavy or take up too much space.

The ArtLIFT ELC delivers robust automotive components in a compact, lightweight system and is designed to suit a variety of vehicle configurations and floor heights.

The ELC deploys in seconds providing the operator with access to a heavy-duty, electronically controlled loading platform.

Lifting capacity up to 500 lbs.

Models available with 20" to 40" of stroke

Complete assembly weighs less than 225 lbs.

Electric actuator is free of hydraulics or pneumatics

Free running system offers drive motor protection

Smooth, quiet, and reliable operation

Compact and easy to install



Innovative Lifting Systems

ArtLIFT FLC

This revolutionary lifting device is designed to assist with the movement of heavy cylinders in and out of ambulances, fire apparatus, service trucks, and other specialty vehicles.

The ArtLIFT FLC has been designed to secure all standard cylinder sizes and is able to accommodate nearly any lifting stroke.

Lifting capacity up to 220 lbs.

Sensors prevent operation unless fully deployed

Third party certified to meet NTEA AMD 003 - 2014

Sleek rear mount design maximizes compartment space

Electric actuator is free of hydraulics or pneumatics

Free running system offers drive motor protection

Smooth, quiet, and reliable operation



AMDOR[®]

DOORS - LIGHTS - LIFTING

Founded on the concept of manufacturing superior products tailored for the specialty vehicle market, AMDOR's products provide value-added features for vehicle manufacturers and end-users alike.

This concept is backed by a company-wide commitment to providing the highest product quality and exceptional customer service.



**4304 Walden Ave.
Lancaster, NY
14086**



**3435 South Service Rd.
Burlington, ON
L7N 3W6**

**info@amdor.com
1-877-462-6367**



AMDOR.com